



## PROGRAM MANAGEMENT MODULE WITH THE NONPROFIT SUCCESS PACK

Change the way you track, manage, and deliver programs.

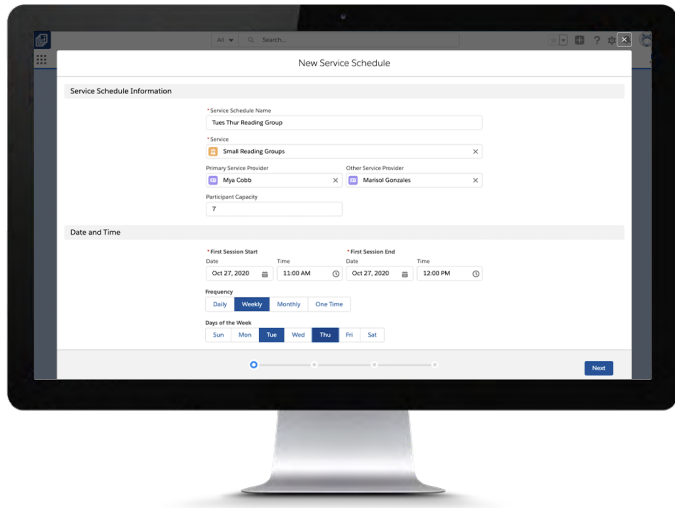
Program Management Module provides you with a standard framework to help you track any type of program or service, regardless of complexity. What you may be tracking on paper or in spreadsheets can be translated into Program Management Module with the help of our ecosystem of implementation partners to help you to understand, optimize, and report on your programmatic outputs. It is free, open source, and works with the Nonprofit Success Pack (NPSP).

Centralize and connect the tools you use to manage the core of what you do – your programs.

### BUILT ALONGSIDE THE NONPROFIT COMMUNITY

Thanks to our incredible nonprofit community of customers and partners, Program Management Module was built with input from real users of the product, from program managers to Salesforce administrators to consultants who will implement the technology. This helped the Salesforce product team build a solution that can reflect the wide variety of programs and services nonprofits are delivering, whether working with clients or running an environmental advocacy program, and mimics how your nonprofit programs staff work.





Setting Up New Service Schedule

## SERVICES TRACKING

Services tracking provides a framework for your organization to track individual service deliveries and to view how those services connect across the overall program.

## PROGRAM MANAGER HOMEPAGE

From the moment you login, see if your team is on track and identify high-level program trends. Plan out your day with upcoming tasks and quickly navigate to sessions that need attendance tracked.

## REPORTS AND DASHBOARDS

Pre-built reports and dashboards give you a unified view across all of your programs and lays the groundwork for layering on more advanced impact measurement tools. Tableau Starter Dashboards for Program Management makes it easy to start viewing and analyzing program data in Tableau.

## PROGRAM TRACKING

Manage your programs overall – from your volunteer reading program to your animal adoption program – as an object in your Salesforce instance which creates a standard format to organize your program data across your organization.

## COHORT TRACKING

Program cohorts allow for more nuanced tracking of groups. Assign program participants into segments based on attributes like season, class, or funder.

## RECURRING SERVICES & ATTENDANCE TRACKING

Save time and manual data entry when setting up recurring services for groups or individual participants and tracking attendance. Service schedules allow program staff to setup multiple offerings of the same service (eg. a Monday & Wednesday Group and a Tuesday & Thursday Group).

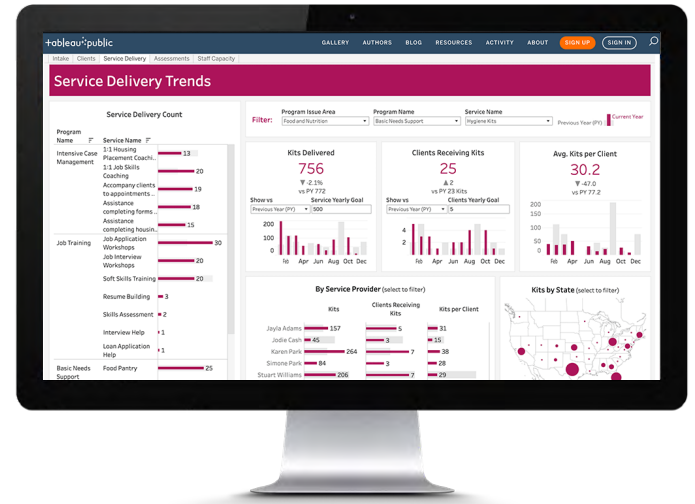


Tableau Starter Dashboards for Program Management

**GET IN TOUCH** Visit us at [www.salesforce.org](http://www.salesforce.org) to learn more.



Salesforce.org is a social impact center of Salesforce focused on partnering with the global community of changemakers. We provide access to powerful technology, community partnerships, and impactful investments that empower changemakers to build a better world. As a social enterprise business unit dedicated to creating solutions for nonprofit, educational, and philanthropic organizations, we innovate on top of the world's #1 CRM, channeling the philanthropic power of our employees, customers and partners to join our global movement for good. Visit [www.salesforce.org](http://www.salesforce.org) for more.